

# Speedmatic MASTER 1305 - 1309

Driver for a single three-phase pump, it can be communicated to other identical devices managing a maximum of 4 pumps.

Three-phase pump managed by INVERTER. General electrical supply is 400 Vac. It can be mounted individually (only one pump) or in groups of 2, 3 or 4 pumps communicated and operating in mode MASTER-SLAVE with alternated sequence of operation. The communication of 2 devices is direct – using cables. The communication of 3 or 4 units is carried out by mean of the communication center SPEEDCENTER – with cables.



1305 MASTER  
1309 MASTER

## OPERATING CHARACTERISTICS

- Pump managed by frequency converter (inverter).
- Possibility of being mounted in group next to other identical devices - up to 4 - operating in mode **MASTER-SLAVE**. The group will be formed by a main device configured like MASTER and the rest of devices configured like SLAVES.
- The operating system is alternated, the device configured as **MASTER** is the responsible of the control but it does not imply that it is first in starting up when there is flow demand in the network.
- **ART system (Automatic Reset Test)**. If the device has been stopped due to the action of the safety system against dry operation, the ART tries to connect the group, with a programmed periodicity because the water supply could have been restored.
- Automatic restore system after an interruption of power supply. System restores the previous state keeping the configuration parameters.
- Volt-free contact for monitoring the alarms displayed in screen originated by irregularities or problems of the system.
- Electronic input for detection of minimum water level in aspiration tank - optional. This system is independent of the safety against dry-operation.
- Inner pressure transducer with digital indicator. / · Inner flow sensor.
- Inner current sensor with instantaneous digital reading.
- Control and information panel with LCD display.
- Register of operational controls. Information about: operated hours, counter of starts, counter of connections to the power supply.
- Register of alarms. Information about type and number of alarms since the starting up of the device.
- Open PID in the expert menu.

### SAFETY SYSTEMS AND PROTECTIONS

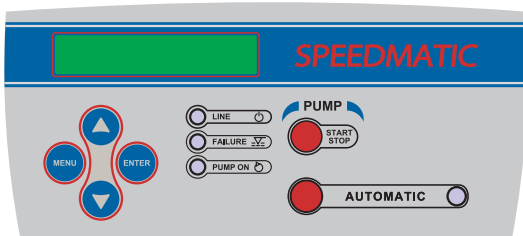
- Control and safety system against over-current.
- Control and safety system against wrong supply voltage.
- Control and safety system against short-circuit between output phases.
- Control and safety system against dry operation.

### TECHNICAL CHARACTERISTICS

- Power supply voltage
- Frequency
- Max. current per phase
- Max. operating pressure
- Range of set pressure
- Protection index
- Max. water temperature
- Max. environment temperature
- Max. flow
- Net weight (without cables)
- Inlet thread
- Outlet thread

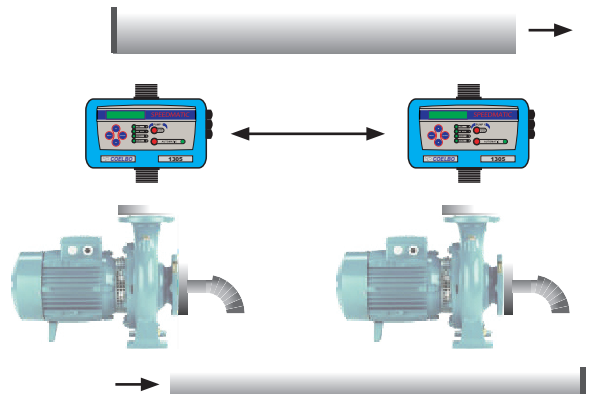
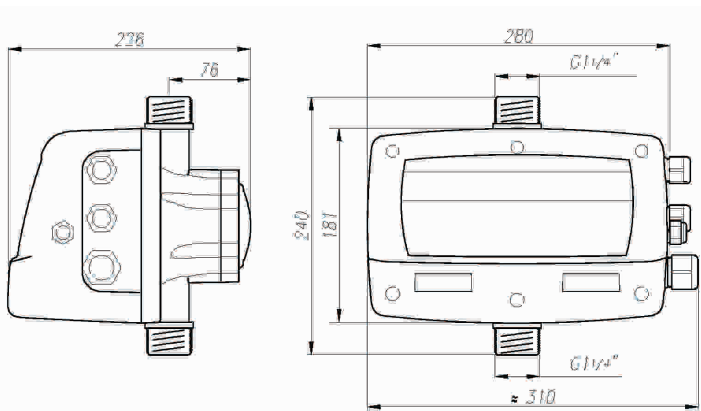
	1305	1309
Power supply voltage	~ 3 x 400 Vac	~ 3 x 400 Vac
Frequency	50/60 Hz	50/60 Hz
Max. current per phase	5A(-3 x 400 Vac)	9A(-3 x 400 Vac)
Max. operating pressure	16 bar	16 bar
Range of set pressure	0.5 ÷ 12 bar	0.5 ÷ 12 bar
Protection index	IP 55	IP 55
Max. water temperature	40 °C	40 °C
Max. environment temperature	50 °C	50 °C
Max. flow	15.000 l/h	15.000 l/h
Net weight (without cables)	3.5 kg	3.5 kg
Inlet thread	G1 1/4" Macho	G1 1/4" Macho
Outlet thread	G1 1/4" Macho	G1 1/4" Macho

### CONTROL PANEL CHARACTERISTICS



Control panel includes: **LCD screen**, warning led lights, push-buttons **START-STOP**, **AUTOMATIC** and configuration system.

### DIMENSIONS



**WHISPER PUMPS LTD**

Leen Court, Boughton, Newark, Nottinghamshire, NG22 9ZD

Registered in England No 4548322