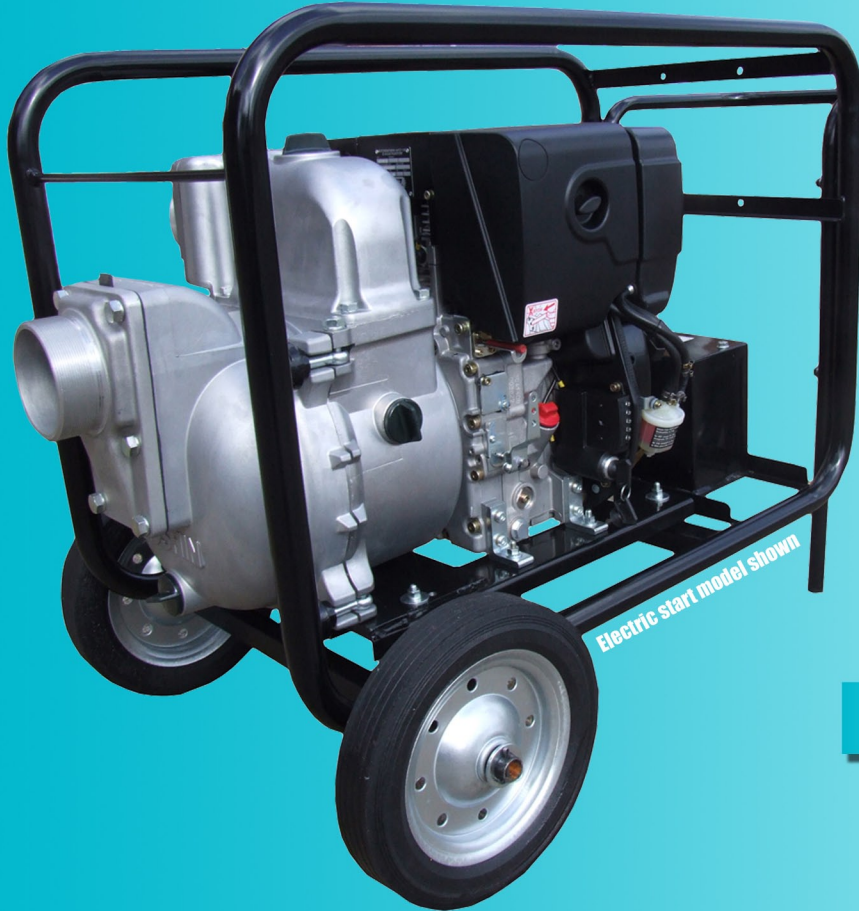




**Trash pump
2",3" & 4"
Petrol & Diesel
Options**

**Ever needed a
pump that self
primes easily and
pumps water with
yucky bits and
even stones and
rubbish ...**



Here It Is!!!!



Honda



Petrol



The Impeller and volute is made of wear resistant hi grade cast iron and the mechanical seal is SIC Silicon carbide for long life and trouble free pumping.

The Petrol unit is powered by a Honda oil alert engine with recoil start.

The pump is supplied with a trash type strainer and hose coupling sets.

And it all come beautifully bundled in a crash frame to protect the set on site.

This pump is ideal for farm and construction duties, civil defence and emergency pumping duties....



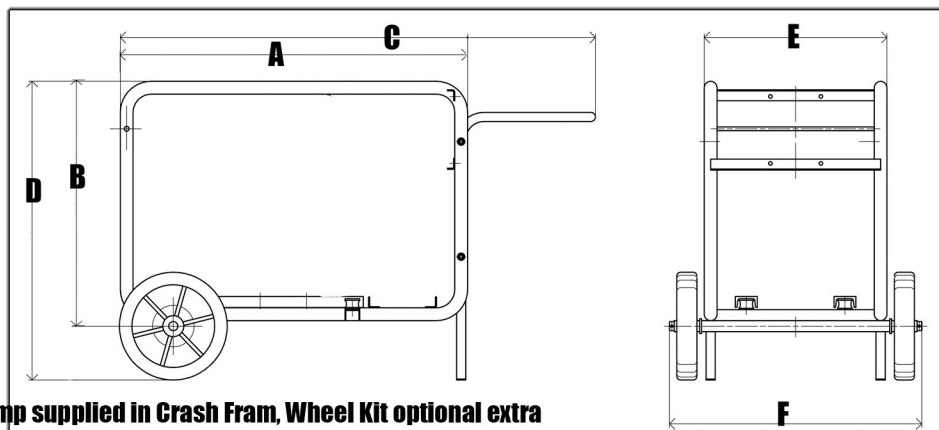
	Model	KTH-50x	KTH-80x	KTH-100x
	Weight	47kg	58kg	78kg
Pump	Type	Self-priming CENTRIFUGAL PUMP		
	Diameters (suction-Discharge)	2"x2"	3"x3"	4"x4"
	Total Head	30m 98ft	27m 89ft	25m 82ft
	Maximum Delivery Volume	700ℓ/min 185GPM	1340ℓ/min 354GPM	1600ℓ/min 422GPM
	Maximum Suction Lift	26ft (8m)		
	Axle Seal	Mechanical seal (silicon carbide)		
Engine	Type	4-stroke, single cylinder		
	Model	Honda GX160	Honda GX240	Honda GX340
	Displacement cylinder	163cc	242cc	337cc
	Fuel combustible	Automobile gasoline		
	Fuel tank capacity	3.6ℓ	6.0ℓ	6.5ℓ
Dimensions (approx)	Starting system	Recoil starter		
	Guaranteed sound power	LWA 106dB	LWA 110dB	LWA 110dB
	A	656	721	790
	B	524	585	675
	C	806	871	940
	D	649	710	800
	E	498	516	580
	F	688	706	770

Solids handling up to:

2" - 20mm

3" - 27mm

4" - 30mm



HATZ
DIESEL



Diesel



The Impeller and volute is made of wear resistant hi grade cast iron and the mechanical seal is SIC Silicon carbide for long life and trouble free pumping

The unit is powered by a Hatz Engine with recoil start Electric start optional extra

The pump is supplied with a trash type strainer and hose coupling sets.

And it all come beautifully bundled in a crash frame to protect the set on site.

This pump is ideal for farm and construction duties, civil defence and emergency pumping duties.

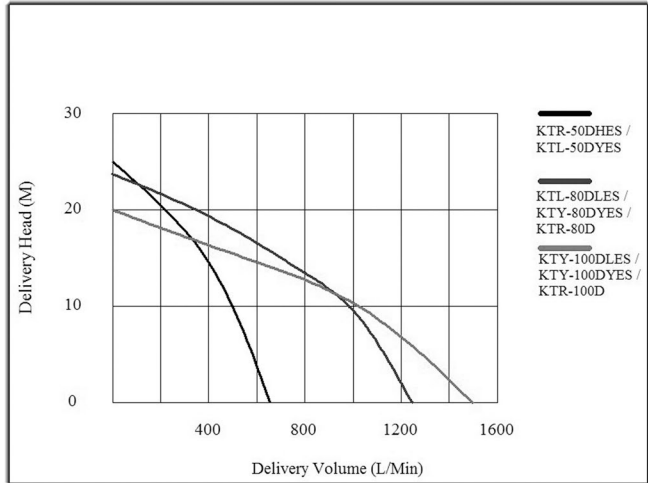
Supplied in Frame and Wheel Kit

Solids handling up to:

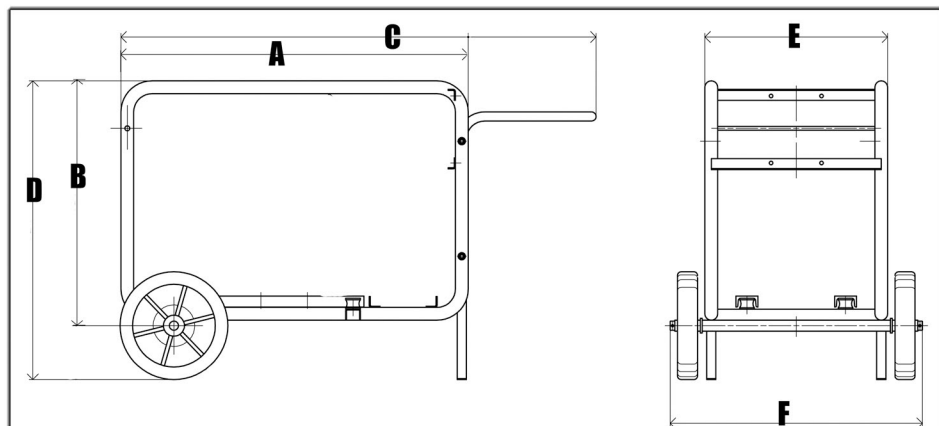
2" - 20mm

3" - 27mm

4" - 30mm



	Model	KTH-50H	KTH-80H	KTH-100H
	Weight	47kg (57kg with wheel kit)	58kg (68kg with wheel kit)	78kg (88kg with wheel kit)
Pump	Type	Self-priming CENTRIFUGAL PUMP		
	Diameters (suction -Discharge)	2"x2"	3"x3"	4"x4"
	Total Head	25m 83ft	24m 80ft	20m 66ft
	Maximum Delivery Volume	650ℓ/min 171GPM	1250ℓ/min 330GPM	1550ℓ/min 410GPM
	Maximum Suction Lift	26ft (8m)		
	Axle Seal	Mechanical seal (silicon carbide)		
Engine	Type	4-stroke, single cylinder		
	Model	1B20	1B30	1B40
	Displacement cylinder (ℓ)	0.243	0.347	0.462
	Fuel	Diesel		
	Fuel tank capacity	3	5	5
	Starting system	Recoil (Optional Electric Start)		
Diamentions (mm)	Guaranteed sound power	102db	102db	102db
	A	800	800	1000
	B	565	565	672.5
	C	1150	1150	1350
	D	715	715	820
	E	500	500	500
F	695	695	690	

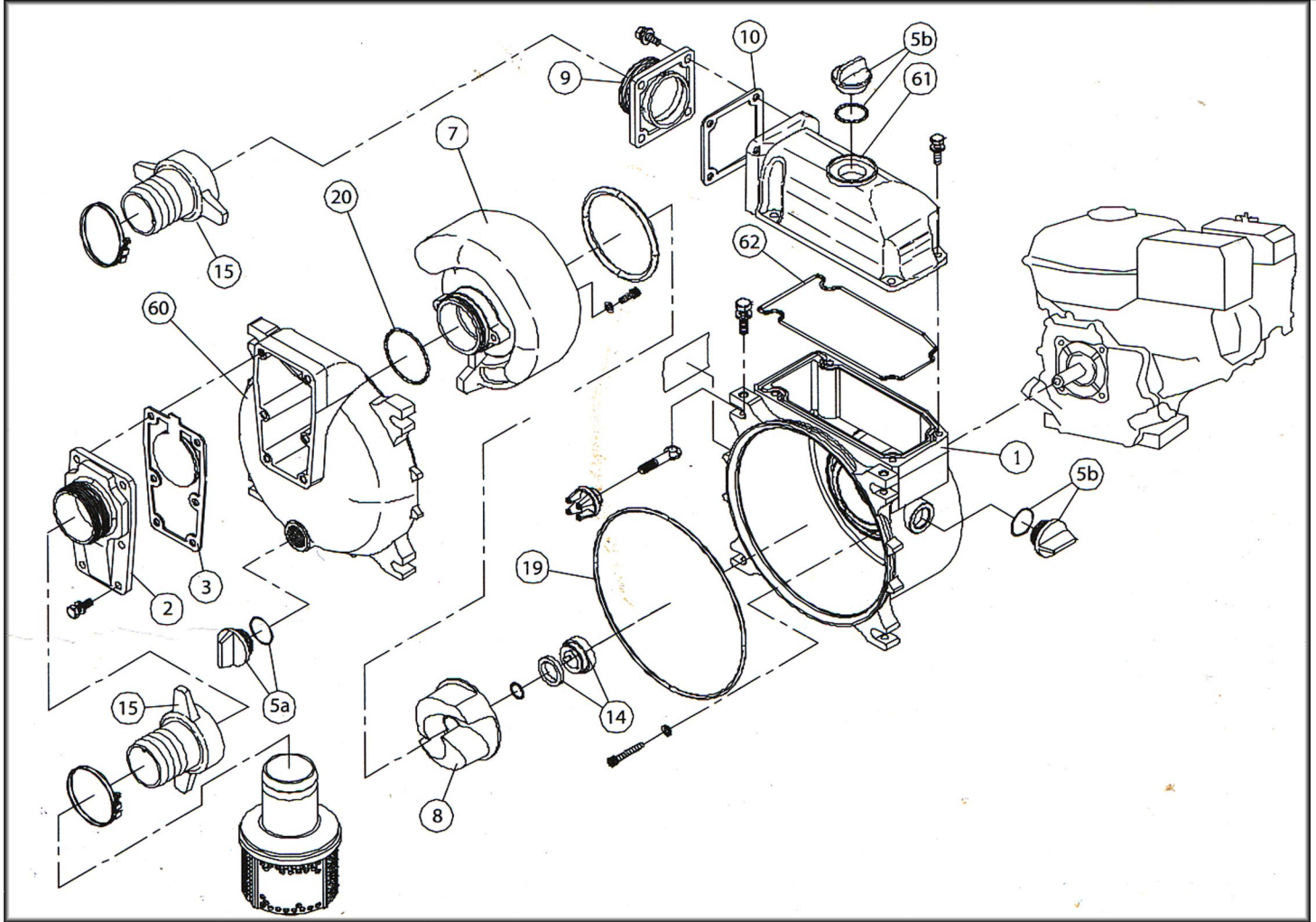
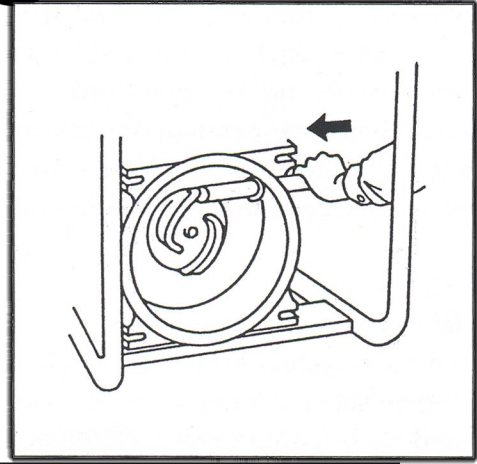


HATZ
DIESEL



Spare Parts

**Easy to remove
pump body
and impeller**



A Quick Look at Spare Parts

PART -	1	2	3	5a	5b	7	8	9	10	14	19	20	60	61	62
MODEL	PUMP CASE	SUCTION FLANGE	CHECK VALVE	DRAIN BUNG	FILLER BUNG	VOLUTE	IMPELLER	DELIVERY FLANGE	GASKET	SEAL	O RING CASE	O RING VOLUTE	Front Cover	Delivery Housing	Head Packing
KTH-50X	0115446	0115839	0115780	0118079 050-607	0118450 050-973	0115489	0115447	0115840	0115490	0115159	0115579	0115676	0115545	0115445	0115548
KTH-80X	0115446	0111573	0115692	0118079 050-607	0118450 050-973	0115559	0115558	0115838	0110584	0115678	0115579	0115676	0115545	0115547	0115548
KTH-100X	0116150	0116268	0118261	0118079 050-607	0118450 050-973	0116488	0115626	0116188	0110750	0115678	0115579	0116270	0116490	0116148	0115548