



UTILITY PUMPS

80-size UTILITY PUMP with 1 1/2" ports
and AC electric motor

Pump Model:

- **53081-2003-230** – 230 volt, 1 phase 50 Hz, (Continuous rated motor)
- **53081-2003-110** – 110 volt, 1 phase 50 Hz, (Continuous rated motor)
- **53081-2003-400** – 400 volt, 3 phase 50 Hz, (no handle)

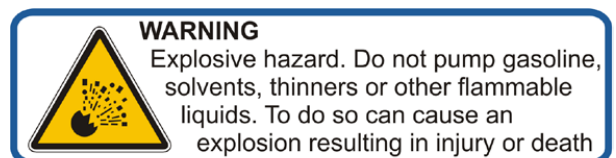
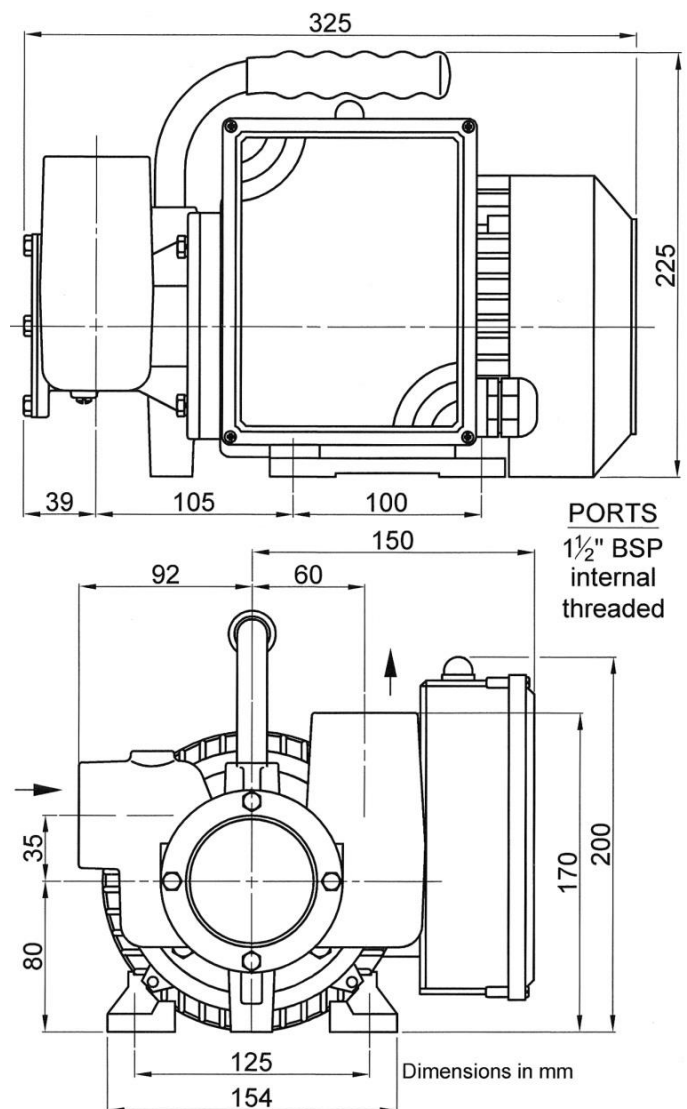
*Nitrile oil-resistant impeller fitted as standard.

*Neoprene impeller versions available.

*Also available: reduced flow versions for liquid viscosity up to 1000cp, and "Blackwater" versions for toilet waste discharge from boats. Check with your pump supplier.

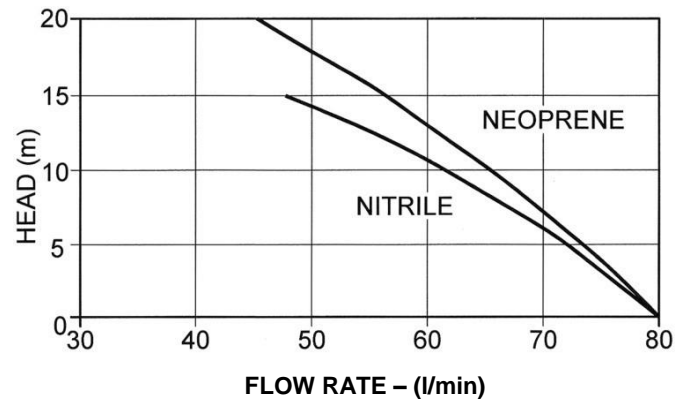
Specifications:

- Pump body: Bronze
- Shaft: AISI316 stainless steel
- Shaft seal: Mechanical (Carbon-ceramic)
- Maximum recommended liquid viscosity: 150cp
- Motor: 0.55kw, 1400rpm, totally enclosed, fan ventilated, IP55 enclosure. Single-phase motors fitted with manual reset thermal overload cut-out
- Rapid self-priming up to 3 metres vertical lift
- Handles hard and soft solids up to 8mm in size
- Can pump up to 90% entrained air
- Up to 30 minutes dry running protection
- Quick and simple to maintain
- Light, compact, portable and tough





Pump Performance



Performance figures are based on manufacturer's tests with water and are not guaranteed for any particular application. Product descriptions and specifications are subject to alteration without notice.

Whisper Pumps
Leen Court
Boughton
Newark
Nottinghamshire
NG22 9ZD
United Kingdom

Call us now: 01777 871100

www.whisperpumps.com