



# Domino Up

## THE NEW GENERATION OF CONTROL PANELS

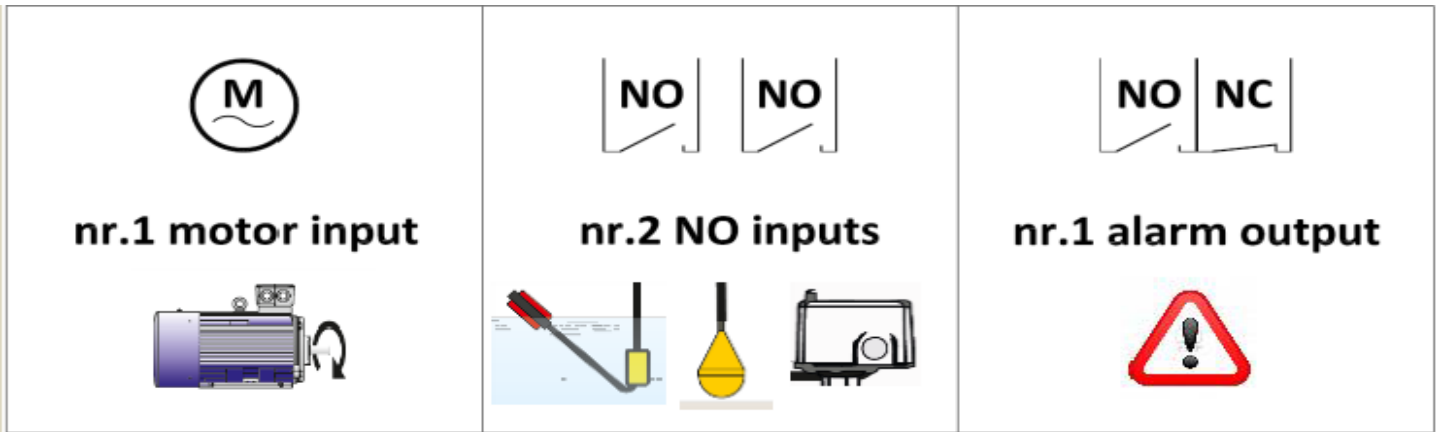
### ELECTRONIC CONTROL PANEL WITH DISPLAY:

FOR CONTROL AND PROTECTION OF ONE SINGLE PHASE OR THREE PHASE MOTOR WITH DRY RUNNING PROTECTION BY COS



#### Features

- Input voltage 1~50/60 Hz 230V  $\pm 10\%$  (DOMINO-UP-M)
- Input voltage 3~50/60 Hz 400V  $\pm 10\%$  (DOMINO-UP-T)
- N.1 or 2 input for start command (settable)
- N.1 alarm output for maximum current, minimum  $\cos \phi$ , minimum water level (settable)
- Pushbuttons for Auto-Off/Reset-Manual motor operation (Manual temporary)
- Green led for AUTO operation
- Green led for motor operating
- Multifunction display - visualization of: voltage, motor current, motor  $\cos \phi$  and alarms
- Push-buttons for protection restoration
- Push-buttons for adjustments and set up from display
- Setting electronic protection for motor overload (from keyboard), time of activation 5"
- Dry running protection setting from  $\cos \phi$  0,1÷0,9 (from keyboard)
- Automatic re-starting pump from dry running after 5' - 90' or stop after 4 cycles of 90'
- Motor protection for wrong phase sequence
- Auxiliary circuits and motor protection fuses
- Main switch with door interlock
- Single-phase version adapted for the insertion of a capacitor (not included)
- Enclosure in ABS
- Output with cable holder
- Protection IP55



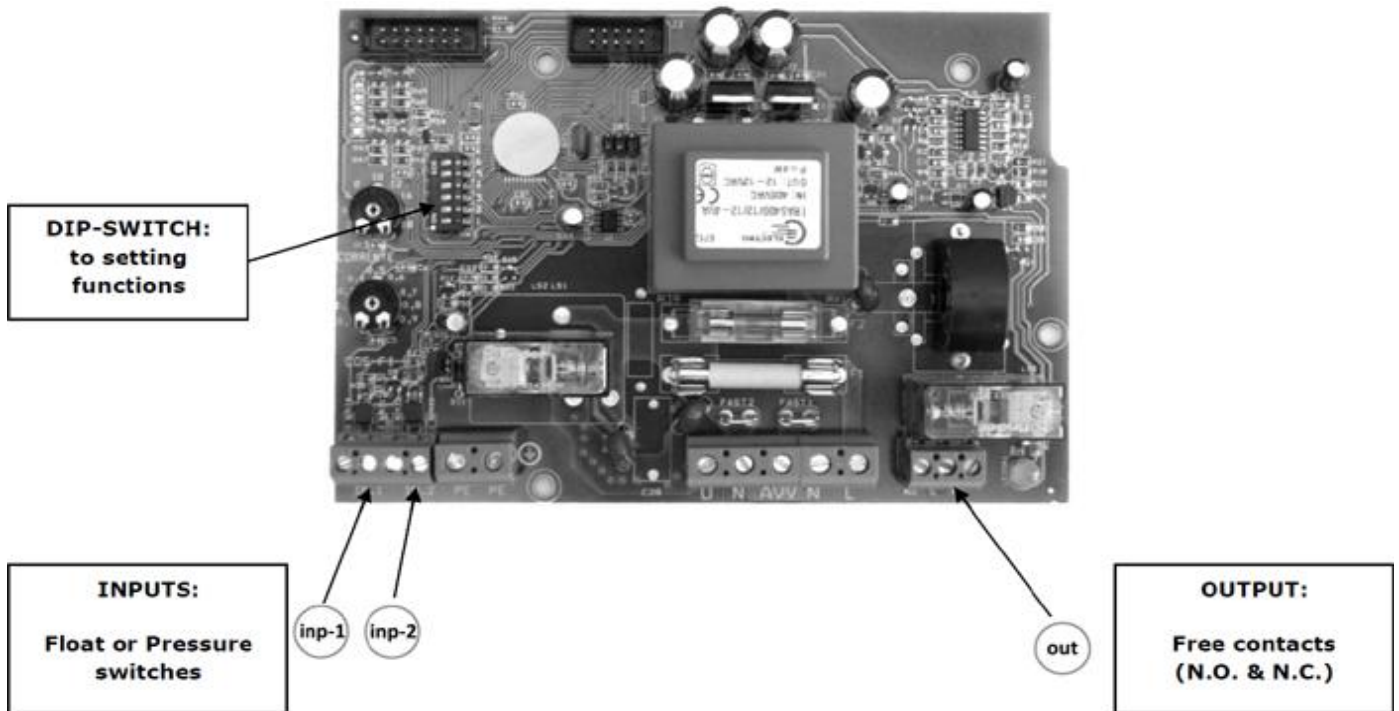
### Benefits of the 'Domino-Up'

Alarm Output for	It works with
<ul style="list-style-type: none"> <li>- Motor overload protection alarm (max current)</li> <li>- Minimum <math>\cos \phi</math></li> <li>- Dry protection</li> <li>- Minimum water level (if activated program)</li> </ul>	<ul style="list-style-type: none"> <li>- Pressure switches</li> <li>- Float Switches (clean water applications)</li> <li>- Multicontact float switches (waste water application)</li> <li>- Other contacts</li> </ul>

# DOMINO-UP

## THE NEW GENERATION OF CONTROL PANELS

### Electronic Board of Domino-Up



## ON DISPLAY IS POSSIBLE TO SET TWO DIFFERENT PROGRAMS

(nr.2 OPERATING FUNCTIONS):

### PROGRAM 1:

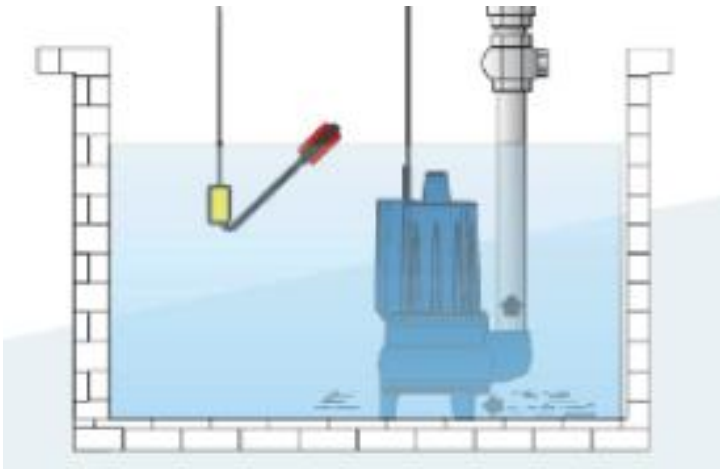
- inp-1** Float or pressure switch, for minimum water level (mechanical dry running protection)
- inp-2** Float or pressure switch, to control the pump
- out** Free contacts for alarms: Minimum water level, minimum cos, maximum current

### PROGRAM 2:

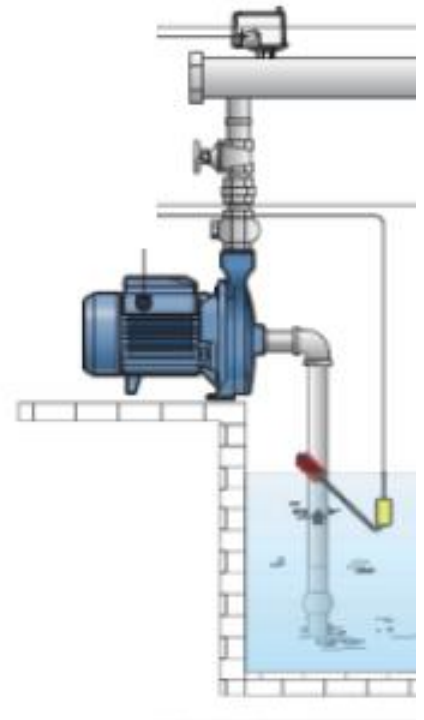
- inp-1** Float or pressure switch, to stop the pump
- inp-2** Float or pressure switch, to start the pump
- out** Free contacts for alarms: Minimum cos, maximum current

## TYPICAL APPLICATIONS WITH PROGRAM 1

Alarm with cos:

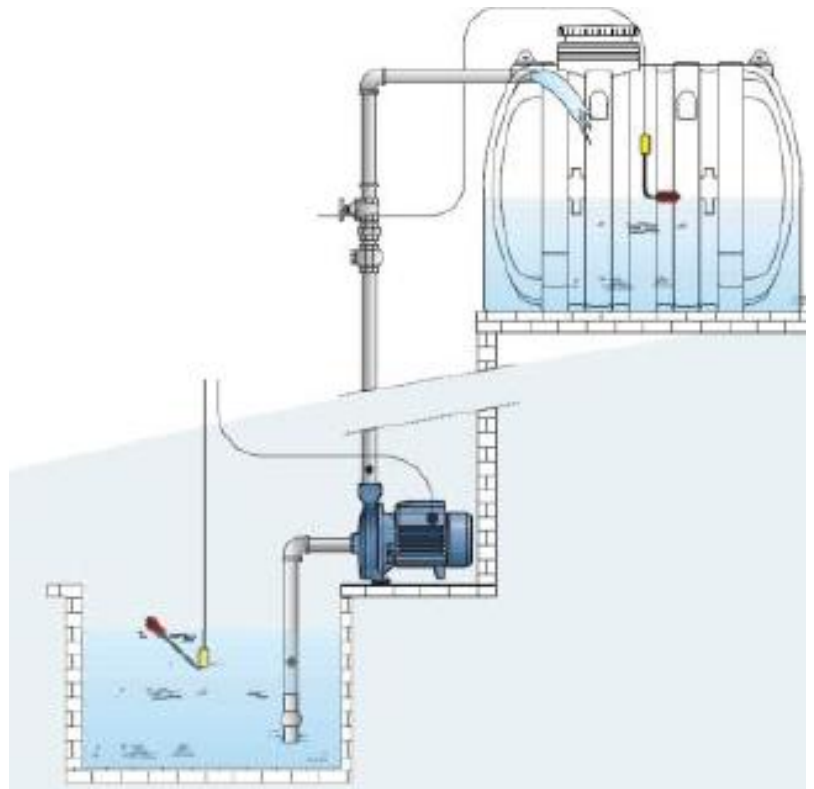
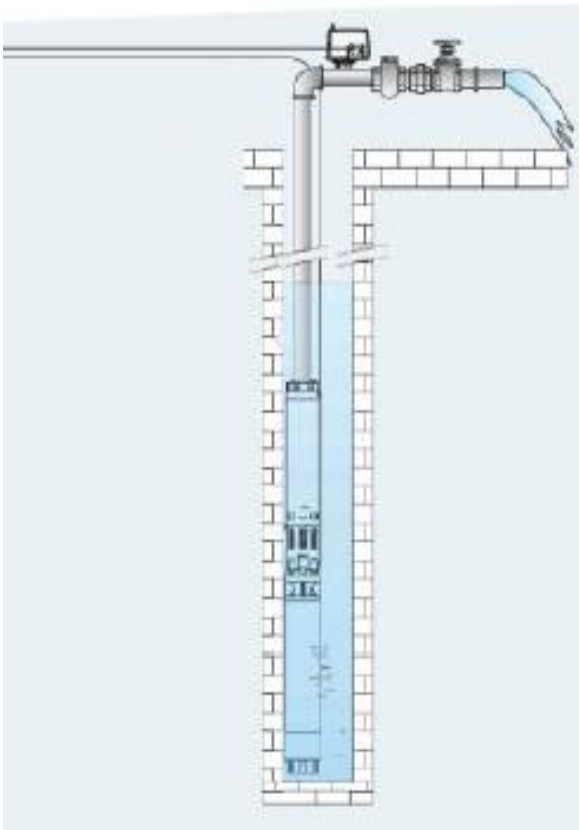


Alarm with float switch:



Alarm with cos

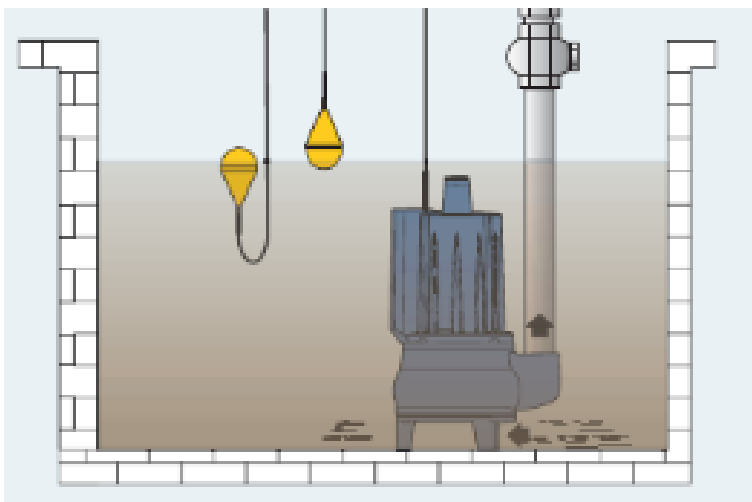
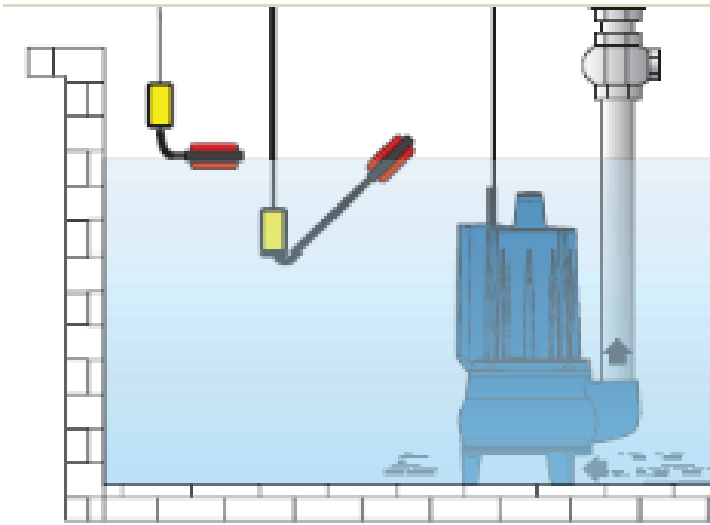
(without probes):



## TYPICAL APPLICATIONS WITH PROGRAM 2

### (Start and Stop System)

Alarm with cos:



#### **Whisper Pumps**

Leen Court  
Boughton  
Newark  
Nottinghamshire  
NG22 9ZD  
United Kingdom

Call us now: 01777 871100

[www.whisperpumps.com](http://www.whisperpumps.com)